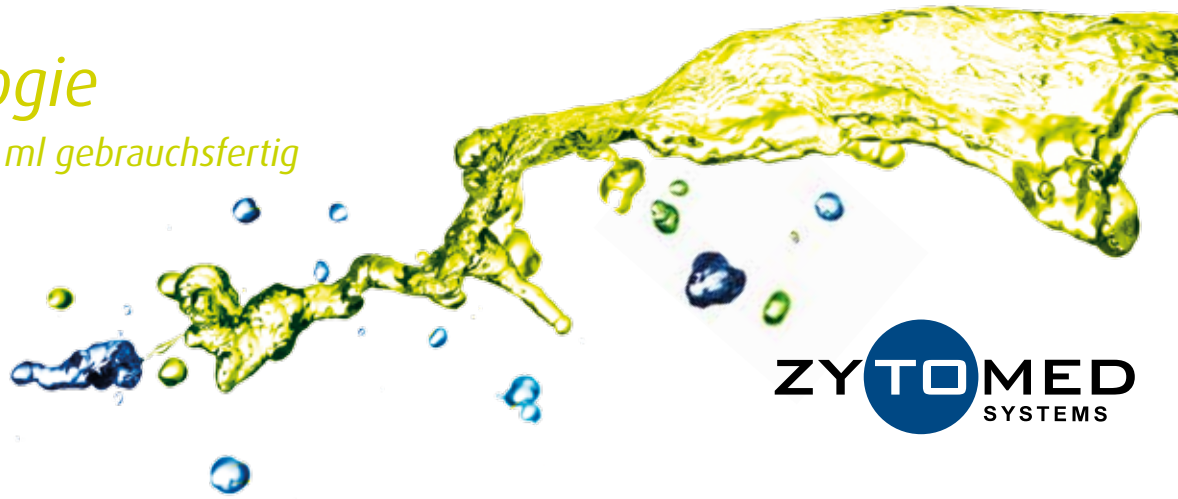
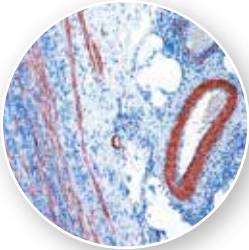


Immunhistologie

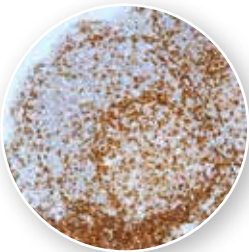
Max-Line, Antikörper 16 ml gebrauchsfertig



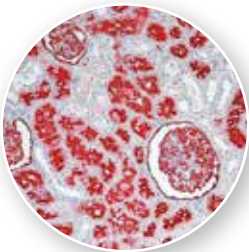
ZYTOMED
SYSTEMS



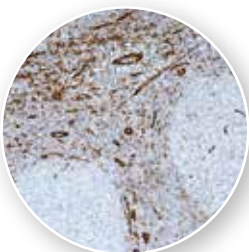
Aktin SM (BMS001) Appendix



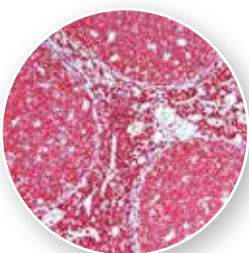
CD4 (BRB042) Tonsille



CD10 (BMS043) Niere



CD31 (BMS044) Tonsille



CD45 (BMS046) Tonsille

Max-Line – gebrauchsfertige Antikörper: Die Antikörper-Alternative in der automatisierten Immunhistologie!

In der Praxis stellen gebrauchsfertige Antikörper eine teure Alternative zu Konzentraten dar. Das muss nicht sein! Sie suchen einen gebrauchsfertigen Antikörper, der Ihren Ansprüchen im Hinblick auf Kosten, Routinetauglichkeit und QM-Akzeptanz standhält? Mit der *Max-Line* haben wir die Lösung für Sie.

Ihre Vorteile im Überblick:

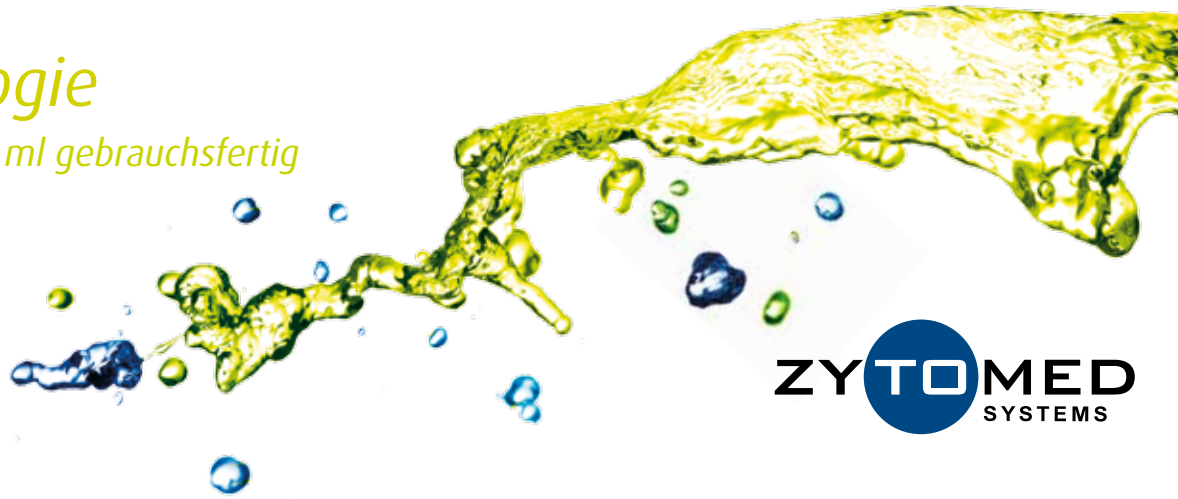
- ▶ 16 ml gebrauchsfertige Antikörper
- ▶ Niedrige Kosten
- ▶ Standardisierte Antikörperkonzentrationen
- ▶ CE/IVD für fast alle *Max-Line* gebrauchsfertigen Antikörper
- ▶ Alle wichtigen Antikörper für Ihre Routinediagnostik verfügbar
- ▶ Sollten Sie weitere Antikörper in diesem Format wünschen, so sprechen Sie uns gern an.

▶ Antikörper 16 ml gebrauchsfertig

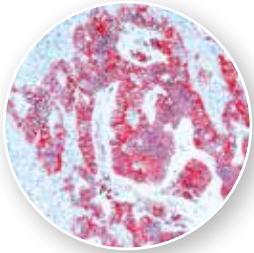
| Beschreibung | Klon | Wirt | Vorbehandl. | Menge | Bestell-Nr. |
|------------------------------------|---------------|--------|----------------------------------|-------|-------------|
| Actin alpha (Smooth Muscle) | 1A4 | Mouse | - | 16 ml | BMS001 |
| BCL2 | E17 | Rabbit | Citrate | 16 ml | BRB055 |
| Calretinin | polyclonal | Rabbit | Citrate | 16 ml | BRB022 |
| CD3 | SP7 | Rabbit | Citrate | 16 ml | BRB041 |
| CD3 | polyclonal | Rabbit | Citrate | 16 ml | BRB063 |
| CD4 | SP35 | Rabbit | Citrate | 16 ml | BRB042 |
| CD8 | SP16 | Rabbit | Citrate | 16 ml | BRB036 |
| CD10 (CALLA) | 56C6 | Mouse | Citrate | 16 ml | BMS043 |
| CD15 | MMA & BY87 | Mouse | Citrate | 16 ml | BMS066 |
| CD20 | L26 | Mouse | optional: Citrate | 16 ml | BMS003 |
| CD31 (PECAM-1) | JC70 | Mouse | Citrate | 16 ml | BMS044 |
| CD34 | QBEnd/10 | Mouse | optional: Citrate | 16 ml | BMS045 |
| CD45 (LCA) | PD7/26 + 2B11 | Mouse | Citrate | 16 ml | BMS046 |
| CD56 | RCD56 | Rabbit | EDTA | 16 ml | BRB039 |
| CD79a | JCB117 | Mouse | Citrate | 16 ml | BMS005 |
| CDX-2 | EPR2764Y | Rabbit | Citrate | 16 ml | BRB028 |
| CEA | Col-1 | Mouse | - | 16 ml | BMS029 |
| Chromogranin A | LK2H10 | Mouse | - | 16 ml | BMS018 |
| Cytokeratin 5 & 6 | D5/16B4 | Mouse | Citrate | 16 ml | BMS017 |
| Cytokeratin 5 & 14 | XM26 + LL002 | Mouse | Citrate | 16 ml | BMS023 |
| Cytokeratin 7 | OV-TL 12/30 | Mouse | Citrate oder Fast Enzyme | 16 ml | BMS030 |
| Cytokeratin 20 | KS 20.8 | Mouse | Fast Enzyme, Pepsin oder Trypsin | 16 ml | BMS037 |

Immunhistologie

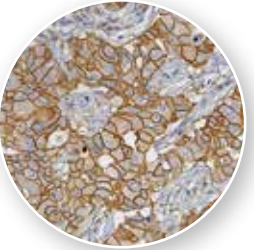
Max-Line, Antikörper 16 ml gebrauchsfertig



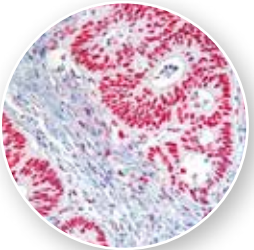
ZYTOMED
SYSTEMS



Ep-CAM (BMS048) Kolonkarzinom



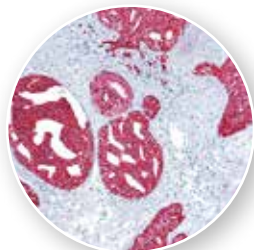
HER2 (BMS014) Mammakarzinom



MSH2 (BMS034) Kolonkarzinom



p40 (BMS050) Prostatakarzinom



P504S (BRB035) Prostatakarzinom

► Antikörper 16 ml gebrauchsfertig (Fortsetzung)

| Beschreibung | Klon | Wirt | Vorbehandl. | Menge | Bestell-Nr. |
|--|--------------------|----------------|----------------------------------|-------|-------------|
| Cytokeratin Broad Spectrum | AE1 + AE3 | Mouse | Citrate, Pepsin oder Fast Enzyme | 16 ml | BMS006 |
| Cytokeratin (HMW) | 34βE12 | Mouse | Citrate, Pepsin oder Fast Enzyme | 16 ml | BMS015 |
| Cytokeratin Pan Plus (AE1 + AE3 + 5D3) | AE1 + AE3 + 5D3 | Mouse | Citrate | 16 ml | BMS057 |
| Cytokeratin Pan | KL1 | Mouse | Citrate | 16 ml | BMS056 |
| Desmin | D33 | Mouse | Citrate | 16 ml | BMS007 |
| E-Cadherin | EP700Y | Rabbit | Citrate | 16 ml | BRB047 |
| Epithelial Specific Antigen (ESA, Ep-CAM) | Ber-EP4 | Mouse | Fast Enzyme oder Citrate | 16 ml | BMS048 |
| Estrogen Receptor | SP1 | Rabbit | Citrate | 16 ml | BRB053 |
| GATA3 | L50-823 | Mouse | Citrate | 16 ml | BMS054 |
| GLUT-1 (Glucose Transporter 1) | polyclonal | Rabbit | Citrate oder EDTA | 16 ml | BRB049 |
| Glypican-3 | 1G12 | Mouse | EDTA | 16 ml | BMS059 |
| Helicobacter pylori | polyclonal | Rabbit | Citrate | 16 ml | BRB032 |
| HER2 (c-erbB-2) Intracellular domain | CB11 | Mouse | Citrate | 16 ml | BMS014 |
| Ki-67 | K-2 | Mouse | Citrate | 16 ml | BMS009 |
| Ki-67 | SP6 | Rabbit | Citrate | 16 ml | BRB040 |
| Melanosome (HMB45) | HMB45 | Mouse | optional: Citrate | 16 ml | BMS010 |
| MLH1 | G168-15 | Mouse | Citrate | 16 ml | BMS033 |
| MLH1 | BC23 | Mouse | EDTA | 16 ml | BMS062 |
| MSH2 | FE11 | Mouse | Citrate | 16 ml | BMS034 |
| p40 (ΔNp63) | BC28 | Mouse | Citrate | 16 ml | BMS050 |
| p53 | BP53-12 | Mouse | EDTA | 16 ml | BMS064 |
| p63 | 4A4 | Mouse | Citrate | 16 ml | BMS052 |
| P504S (AMACR) | polyclonal | Rabbit | EDTA | 16 ml | BRB035 |
| pan B-Cocktail (CD20 + PAX-5) | L26 + polyclonal | Mouse & Rabbit | Citrate oder EDTA | 16 ml | BMS026 |
| pan Basalcell-Cocktail (p63 & Cytokeratin 5/14) | 4A4 + XM26 + LL002 | Mouse | Citrate | 16 ml | BMS051 |
| PAX-5 | polyclonal | Rabbit | EDTA | 16 ml | BRB027 |
| Progesterone Receptor | SP42 | Rabbit | Citrate | 16 ml | BRB038 |
| S100 | 4C4.9 | Mouse | Citrate | 16 ml | BMS013 |
| TTF-1 (Thyroid Transcription Factor 1) | 8G7G3/1 | Mouse | Citrate | 16 ml | BMS016 |
| Vimentin | V9 | Mouse | optional: Citrate | 16 ml | BMS012 |

Sämtliche Preise zu unseren Produkten finden Sie auf www.zytomed-systems.de